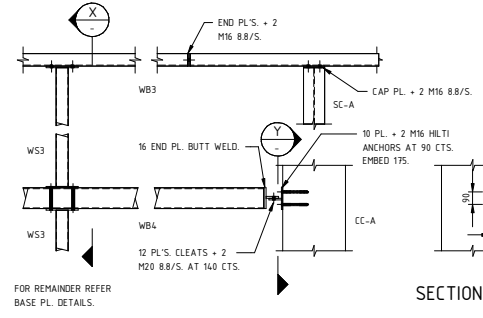
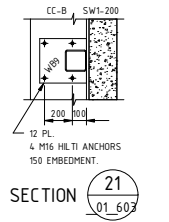
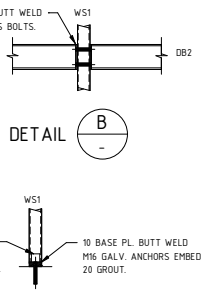
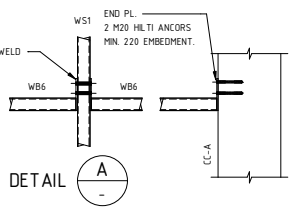
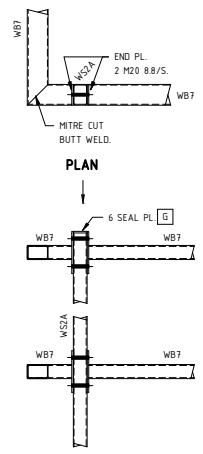
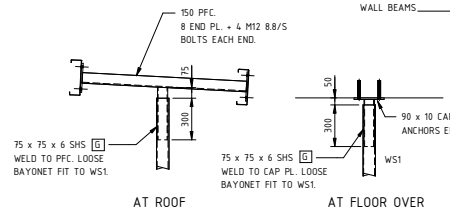
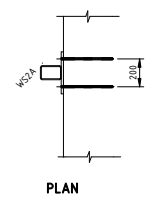


TYPICAL ELEVATIONS - INTERNAL WALLS

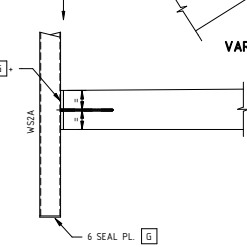
WALL STIFFENERS	WS1	89 x 89 x 6 SHS	[E]
WALL BEAMS	WB6	89 x 89 x 6 SHS	[E]
	DB2	190 PFC	[E]



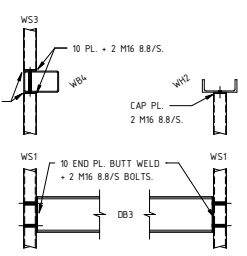
VARIATION AT CORNER



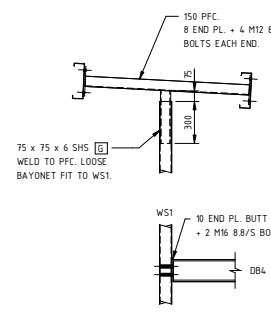
VARIATION AT STAIR



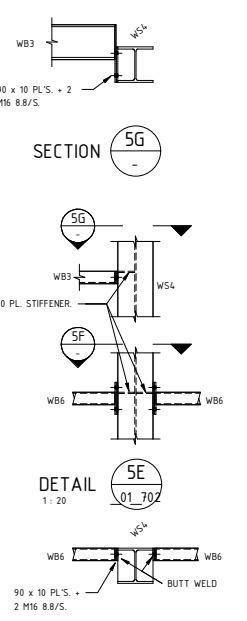
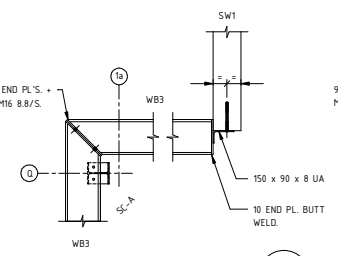
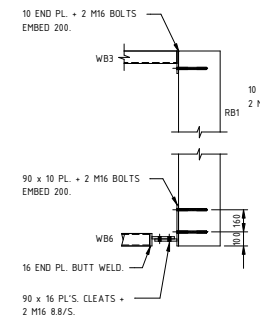
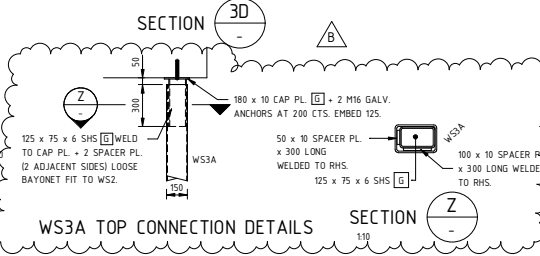
WS2A TO SLAB DETAILS



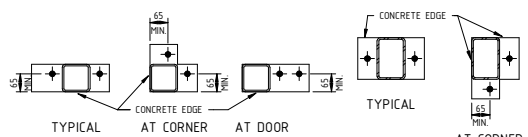
DB4 DETAILS



WS3A TOP CONNECTION DETAILS



FOR REMAINDER REFER BASE PL. DETAILS.



WS1, WS3
10 BASE PL.
F.S.B.W.
2 M16 H.D. CAST-IN BOLTS
EMBED 200
20 GROUT.

WS2, WS3A
16 BASE PL.
F.S.B.W.
2 M20 H.D. CAST-IN BOLTS
EMBED 350
20 GROUT.

WS4
10 BASE PL.
F.S.B.W.
2 M20 H.D. CAST-IN BOLTS
EMBED 350
20 GROUT.

WS4A
32 BASE PL.
F.S.B.W.
4 M24 8.8/S H.D. CAST-IN BOLTS
EMBED 700
20 GROUT.

'WS' BASE PLATE DETAILS
REFER DETAIL 2A FOR WS1A BASE PLATE DETAILS.

REFERENCE DRAWINGS:
FOR STANDARD NOTES REFER TO DRG. NO. STR_00_001.

TYPICAL WALL SUPPORT STRUCTURE DETAILS

WB3 AND WB4 TYPICAL DETAILS